



MS-222 Safety

Tricaine Methanesulfonate [CAS #886-86-2]

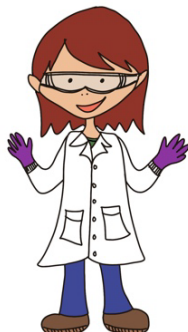
Hazards: Harmful to aquatic life and eye, skin, and respiratory irritant

Before Work

Review SDS, complete hands-on training, and find the nearest eyewash and safety shower.

During Work

- Wear appropriate PPE to avoid contact.
- Use fume hood when bringing MS-222 powder into solution.



Dry Chemical PPE

- Safety glasses, nitrile gloves, lab coat, and fully cover legs and feet.

Liquid Solution PPE

- Safety glasses and nitrile gloves.

After Work

- Clean residue with soap and water or Simple Green.
- Wash hands with soap and water.

Treating Exposures

1. Remove contaminated clothing.
2. Flush eyes or skin for 15 minutes.
3. If inhaled, move to fresh air.
4. Seek medical attention.

Cleaning Spills

1. Put on PPE.
2. Clean spilled material.
3. Put debris in container, place in chemical waste SAA, add waste tag, and request pickup.

Call 617-495-5560 for emergency assistance.

To learn more about MS-222, scan QR codes or email ehs@harvard.edu.



SDS



Lab Safety
Guideline